

# Pinpoint™

*High definition micro printing  
with the Domino A-Series range*

## For Applications Where Size Matters

The Domino Pinpoint™ printer delivers print as small as 0.8mm in height and is ideal for applications such as cable and wire marking, electronics, pharmaceuticals, automotive parts and cosmetics where codes must be both discreet and high quality.



## Quality and Legibility are Uncompromised

Modular design and heated head technology ensure that code quality remains constant from start of production to line shutdown.

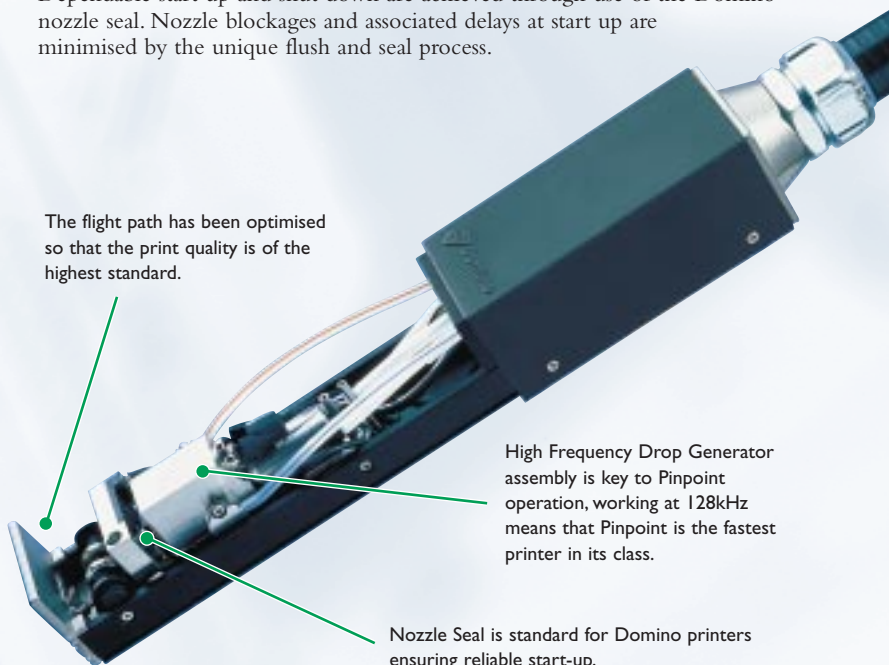
## Exceptional Speed and Quality

Pinpoint is unrivalled in its class, printing single line at up to 178 meters (580 feet) per minute where character spacing is 26 characters per inch, or up to 308 meters (1010 feet) per minute at 15 characters per inch.

## Print When and Where You Want

Dependable start up and shut down are achieved through use of the Domino nozzle seal. Nozzle blockages and associated delays at start up are minimised by the unique flush and seal process.

The flight path has been optimised so that the print quality is of the highest standard.

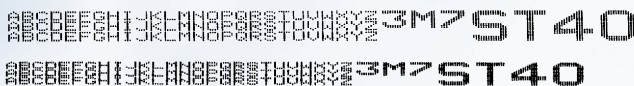


High Frequency Drop Generator assembly is key to Pinpoint operation, working at 128kHz means that Pinpoint is the fastest printer in its class.

Nozzle Seal is standard for Domino printers ensuring reliable start-up.

### Print Formats:

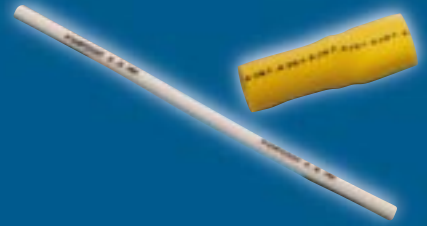
- 21 drop 7 drop
- 16 drop 5 drop
- 12 drop



Up to 3 lines of print in mixed dynamic formats  
Actual (3x7) 12 and 21 drop print samples



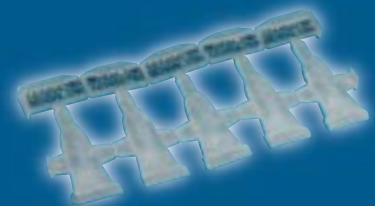
High accuracy of dot placement makes Pinpoint ideal for matrix marking



No object is too small to be coded with Pinpoint accuracy



Quality Pinpoint codes can complement pack graphics



Codes can fit into small spaces



**DOMINO**

## Control Unit\*

Control panel:	Membrane touch button
Cabinet: (A300)	Stainless steel (316) rated to IP55 (BSEN60529:1992) IP65 (BS5490:1977)
Cabinet: (A200)	Stainless steel (304) rated to IP53 (BSEN60529:1992)
Cabinet dimensions:	245mm x 475mm x 725mm (9.6" x 18.7" x 28.5")
Weight:	36kg (79lbs)

## Character Control

- ◆ Auto repeat
- ◆ Auto invert/reverse
- ◆ User defined clock format
- ◆ Sequential/batch numbering
- ◆ Inverse reverse and bold characters
- ◆ Character width and height adjustment
- ◆ Print delay
- ◆ Product counter
- ◆ Barcodes
- ◆ Message repeat

## Data Input Options

Serial RS232  
 Serial RS485  
 Rate: 110-38.4k Baud, software configurable

## Ink System

Viscosity control: Automatic  
 Ink bleed control: Automatic on start up  
 Ink and make-up refill: 825ml (.87qt) cartridge automatically metered  
 Peltier: Standard (A300), Optional (A200)

## Printhead

Dimensions: 215mm x 41mm x 47mm (8.46" x 1.61" x 1.85")  
 Conduit length: 3m (11.8')  
 Positive air: Optional internal supply.

## Environment

Temperature range: 5 - 45°C (40 - 112°F) operating  
 Humidity: 10 - 90% (non-condensing)  
 Electrical requirements: Single phase, fully auto-ranging  
 90 - 132V/180 - 264V, 50/60Hz 200VA

## Standard Connections

Product detector: 12V 100mA for photocell or proximity detector: IP68 6 way socket  
 Shaft encoder input: Open collector or TTL encoder  
 12V via IP68 6 way socket

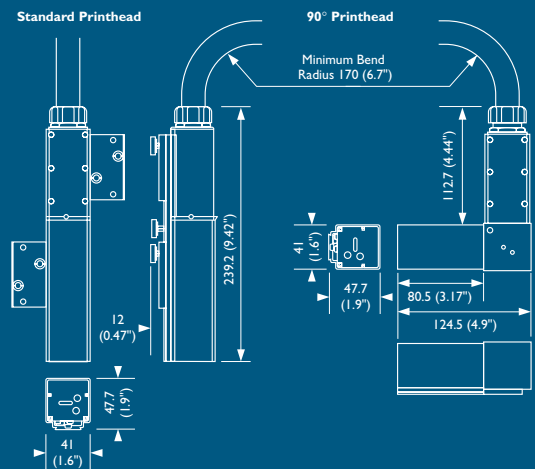
## Options

Alarm beacon connector: IP68 7 way socket  
 Auxiliary alarms connector: IP68 9 way plug  
 User port connector: IP68 25 way socket

## Character Height

Throw Distance	Minimum	Maximum
2mm (.08")	0.8mm (.03")	3.2mm (.13")
6mm (.24")	1.0mm (.04")	3.8mm (.15")
12mm (.48")	1.2mm (.05")	4.8mm (.19")

## Dimensions



\*Pinpoint specification differs slightly from that of standard machines



**Domino UK Ltd**  
 Bar Hill  
 Cambridge CB3 8TU  
 Tel: +44 (0)1954 782551  
 Fax: +44 (0)1954 782874  
 Web: [www.domino-printing.com](http://www.domino-printing.com)

**Domino Amjet Inc.**  
 1290 Lakeside Drive  
 Gurnee, Illinois 60031  
 Tel: +1 800-323-4754  
 Fax: +1 847-244-2645  
 Web: [www.dominoamjet.com](http://www.dominoamjet.com)



UK: Cert. No. FM 13758  
 BS EN ISO 9001



USA: Cert. No. FM 23343  
 BS EN ISO 9002